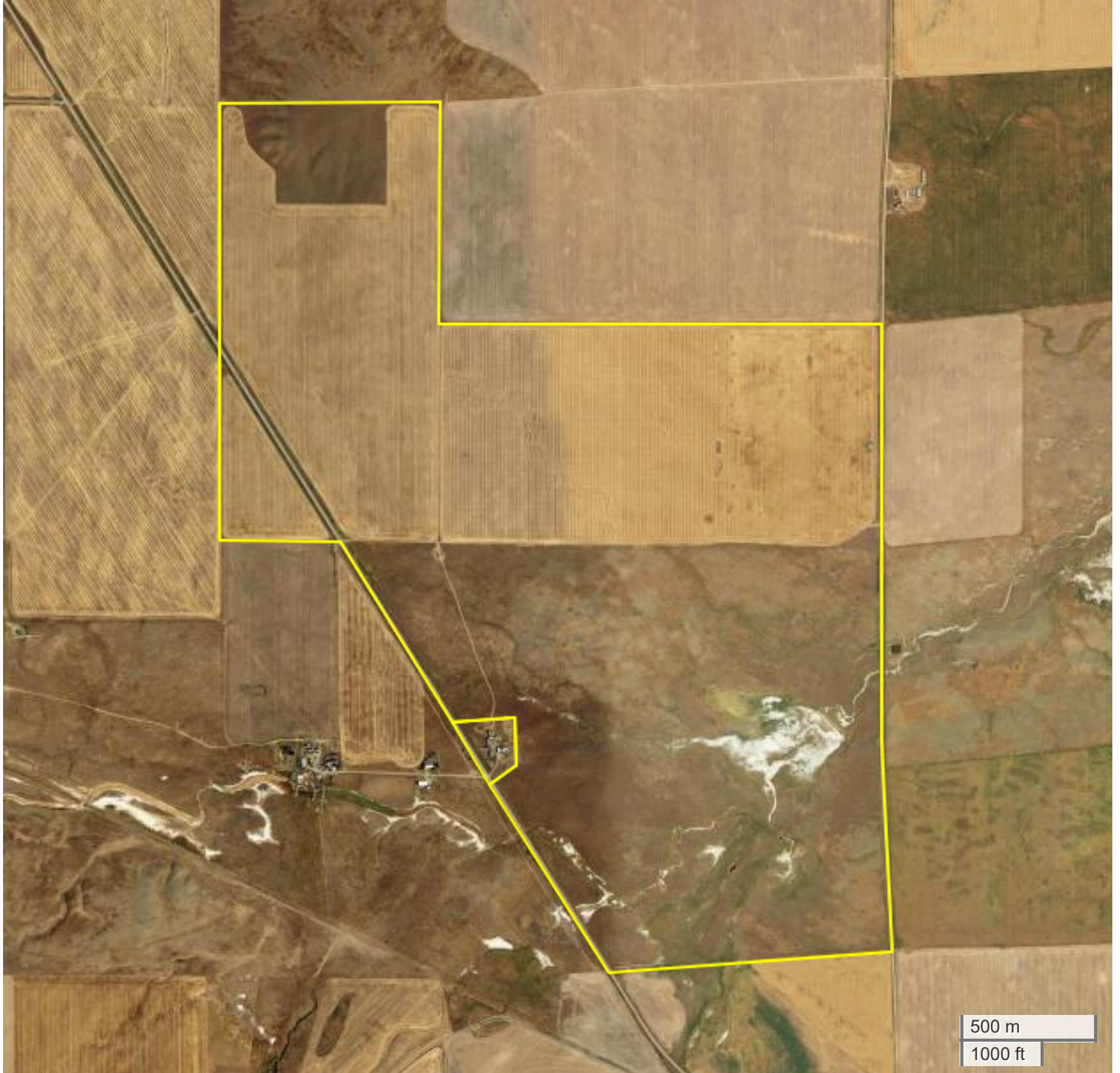




TRACT 1 & 2  
AERIAL MAP



Center: 47.640341, -110.296977

23-22N-11E

Geraldine CCD

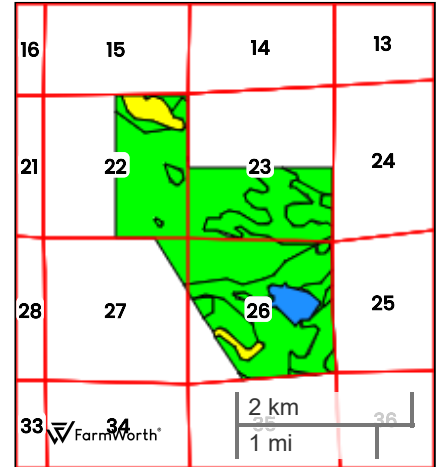
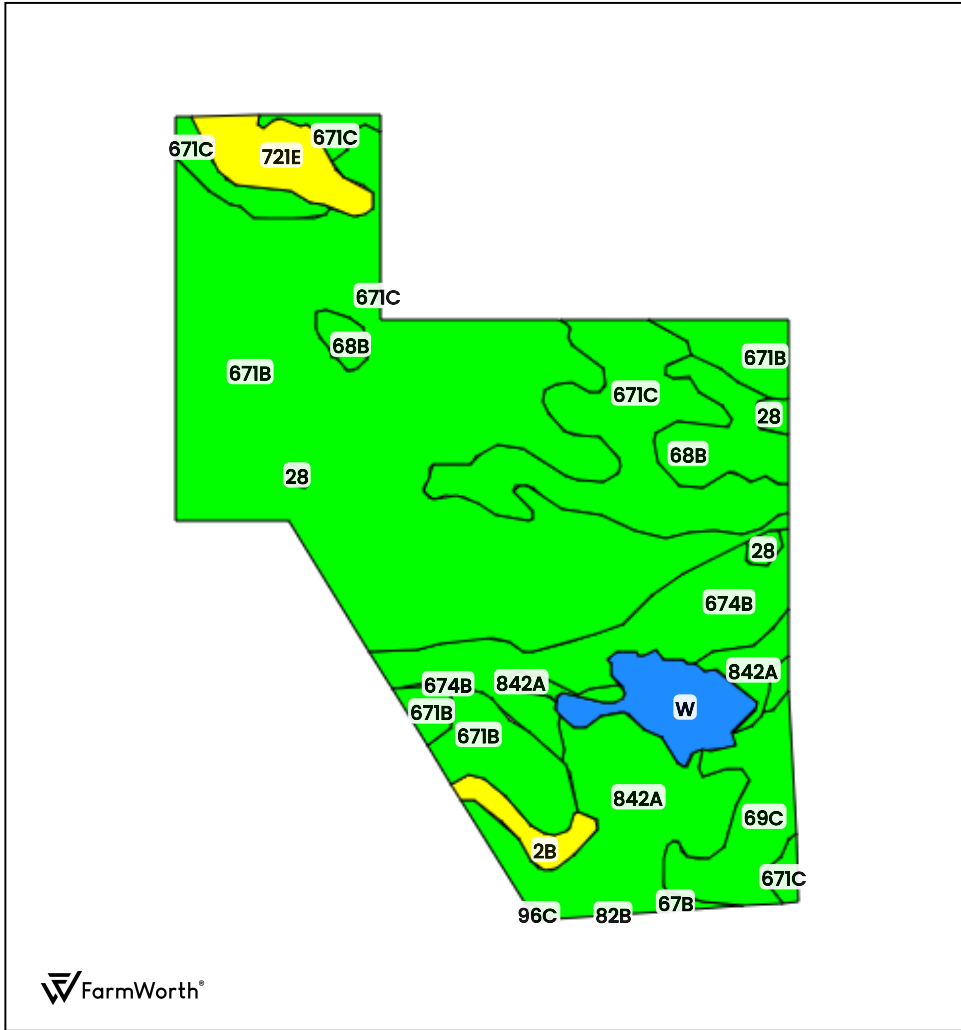
Chouteau County, MT



FarmWorth, LLC makes no warranties, express or implied, regarding the accuracy of any information provided through FarmWorth.com. User is solely responsible for independently verifying all information prior to use and waives any claims against FarmWorth, LLC arising from inaccuracies in such information.



TRACT 1 & 2  
TOTAL SOILS



County: Chouteau County, MT  
 Location: 23-22N-11E  
 Township: Geraldine CCD  
 Acres: 1195.41  
 Date: 05/11/2026



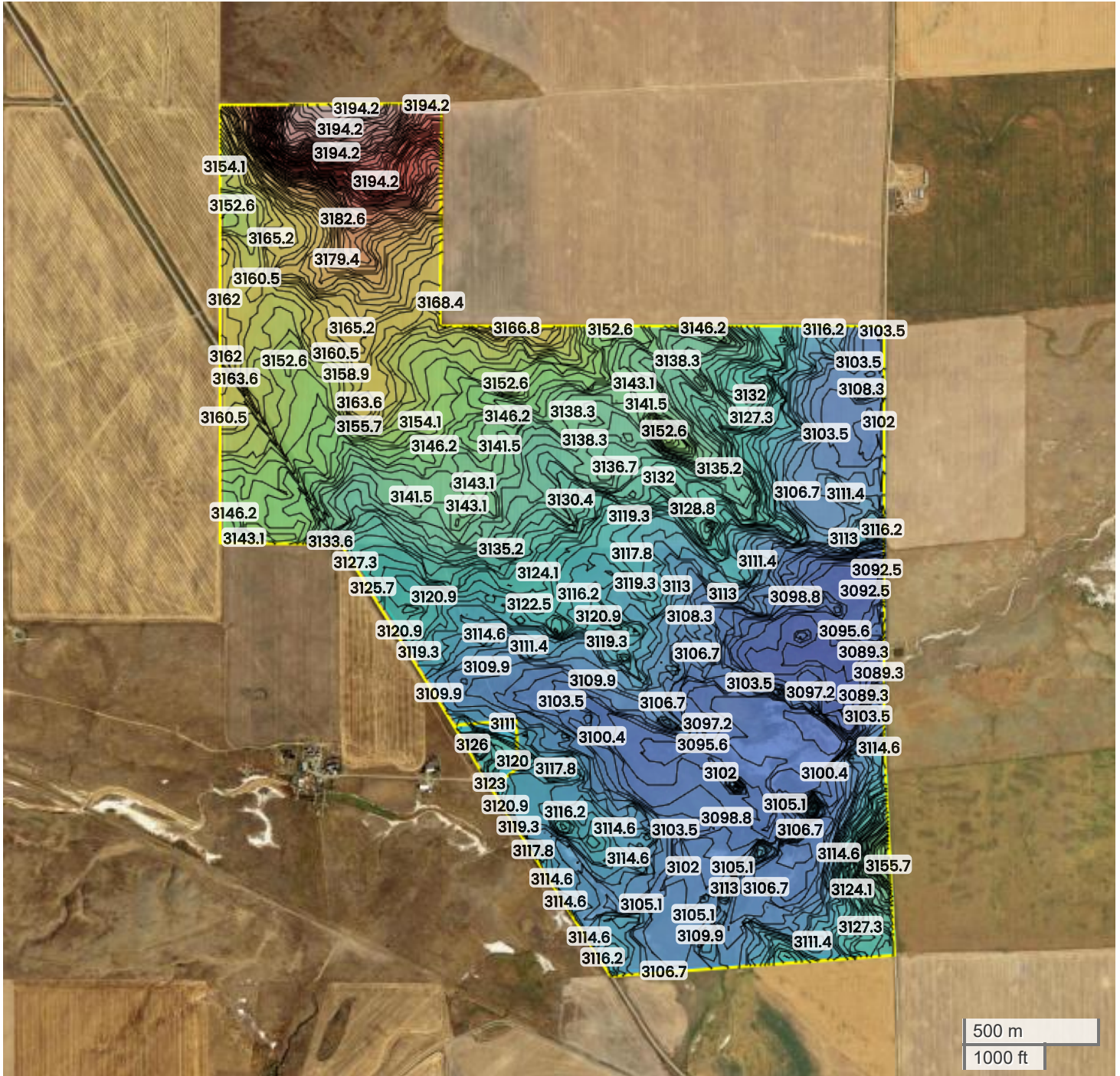
FarmWorth, LLC makes no warranties, express or implied, regarding the accuracy of any information provided through FarmWorth.com. User is solely responsible for independently verifying all information prior to use and waives any claims against FarmWorth, LLC arising from inaccuracies in such information.

Code	Description	Acres	% of field	Overall NCCPI	Soil Class (Irr)	Soil Class (Non-Irr)	Drainage Class
671B	Bearpaw-Vida clay loams, 0 to 4 percent slopes	606.57	50.74 %	30	3	3	Well drained
671C	Bearpaw-Vida clay loams, 2 to 8 percent slopes	154.51	12.93 %	30	3	3	Well drained
842A	Wyola-Daglum complex, 0 to 2 percent slopes	127.36	10.65 %	33	-	4	Moderately well drained
674B	Bearpaw-Waltham complex, 0 to 4 percent slopes	100.10	8.37 %	29	3	3	Well drained
69C	Vida-Zahill clay loams, 2 to 8 percent slopes	52.65	4.40 %	34	3	3	Well drained
68B	Gerber silty clay, 0 to 4 percent slopes	46.04	3.85 %	36	4	4	Well drained
W	Water	43.46	3.64 %	0	-	-	-
721E	Zahill-Vida clay loams, 8 to 25 percent slopes	36.86	3.08 %	24	-	6	Well drained
2B	Marcott-Bigsandy complex, 0 to 4 percent slopes	15.74	1.32 %	25	-	6	Somewhat poorly drained
28	Nishon clay loam, 0 to 1 percent slopes	9.08	0.76 %	17	3	3	Poorly drained
67B	Bearpaw clay loam, 0 to 4 percent slopes	2.29	0.19 %	30	3	3	Well drained
96C	Macar loam, 4 to 8 percent slopes	0.75	0.06 %	32	3	3	Well drained
82B	Wyola silty clay loam, 0 to 4 percent slopes	0.00	0.00 %	35	2	3	Well drained
<b>Average:</b>				<b>29.2</b>			

Soils data provided by USDA and NRCS.



TRACT 1 & 2  
TOPOGRAPHY



3088 ft

3194 ft



Center: 47.640330, -110.297010

23-22N-11E

Geraldine CCD

Chouteau County, MT

Source: USGS 10m DEM

Interval(ft): 3

Max: 3194.2 ft

Min: 3087.7 ft

Range: 106.5 ft

Average: 3141.0 ft

FarmWorth, LLC makes no warranties, express or implied, regarding the accuracy of any information provided through FarmWorth.com. User is solely responsible for independently verifying all information prior to use and waives any claims against FarmWorth, LLC arising from inaccuracies in such information.